

Year 6

Hello and welcome back Year 6! Firstly, we hope that you had a great Easter break and are ready to get stuck back into learning. We are so excited for the new term and have lots of exciting things planned to capture your interest and imagination!

The children have been working exceptionally hard towards the SATs papers taking place at the beginning of May, we are feeling confident that all their work will pay off! It is essential that the children are in school every day, on time (by 8:40am) and this is ever more important during SATs week: **Monday 11<sup>th</sup> May 2026 – Friday 14<sup>th</sup> May 2026**. A reminder that school is **OPEN** to children in Year 6 on **Thursday 7<sup>th</sup> May 2026** and that they are **expected** to attend.

Many thanks for your support  
**Mrs White & Mr Gater**

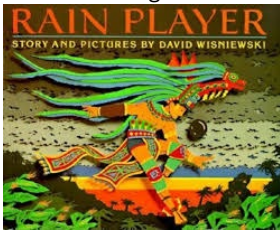
Curriculum Information

English

This term in English and Reading, we will be exploring different genres of writing, focusing on fiction and non-fiction.

We will be analysing the Rain Player, exploring the theme of Fate vs. Free Will.

It follows a young boy called Pik, challenging the rain God Chac to a high stakes pok-a-tok ballgame. This is to save his village from a devastating drought and change the fate of his village.



Maths

This term we will be consolidating our learning and rehearsing our fluency and maths facts.

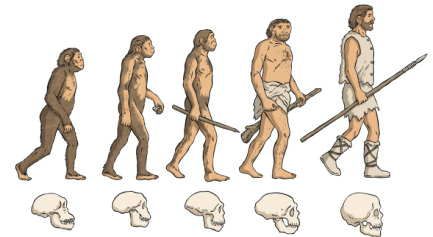
Please continue to support the children at home by:

- Encouraging TTRS practice
- Quick, rapid recall of number facts

Maths in Year 6				
Number - Number and Place Value	Number - Addition and Subtraction	Number - Multiplication and Division	Number - Fractions, Decimals and Percentages	Ratio and Proportion
Algebra	Measurement	Geometry - Properties of Shapes	Geometry - Position and Direction	Statistics

Science

In science, we will be learning about evolution and how living things produce similar offspring; how features are inherited; and how adaptation leads to evolution.



History

In history, we will be learning about Victorians daily life for the poor and rich; the reign of Queen Victoria; the British empire; and the impact of the Industrial Revolution.



Computing

In computing this term, we will be developing our knowledge and understanding of using a computer to produce 3D models.

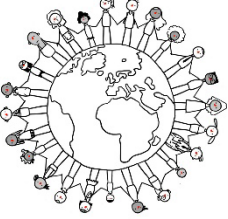







Music

We will be preparing and rehearsing our end of school play....more details to follow!





<p style="text-align: center;"><b>RE</b></p> <p>In RE, we will be learning about Humanism. They will consider how humans are responsible for confronting issues which harm people or nature; that actions have consequences; and that the right action depends on the context.</p> 	<p style="text-align: center;"><b>PE</b></p> <p>We will be honing our skills in gymnastics and rounders.</p>  <p style="text-align: center;">In the final term, we will have our outdoor learning sessions!</p>	<p style="text-align: center;"><b>PSHE</b></p> <p>For the first part of the summer term, we will be focusing on the topic of relationships – we will be looking into loss, love and technology.</p> <p>The second part of the summer term, we will focus on the topic of “changing me” which includes topics like puberty, self-image and conception.</p> <p style="text-align: center;"><b>If you have any concerns about this, please come at chat to the year 6 team.</b></p> 
--	--	--

<p style="text-align: center;"><b>Spanish</b></p> <p>We will be learning to talk about plants and animals. We will also be discussing school life with increased verb conjugation expectation.</p> 	<p style="text-align: center;"><b>Art</b></p> <p>In art, we will be focusing on the Sculptor Brancusi and paper designer Richard Sweeney, focusing on pencil skills depicting birds, clay tiles and prints.</p> 	<p style="text-align: center;"><b>DT</b></p> <p>In DT this term, we will be designing and create a structurally sound playground which is environmentally friendly.</p> 
--	---	---

**Home Learning**

At Meadow Park Academy, we believe that home learning can provide valuable opportunities to consolidate and practice learning.

We expect all children in Year 6 to complete the following weekly:

<p style="text-align: center;"><b>Reading</b></p> <p>Children should be reading a minimum of 5 times a week at home. Please make sure to sign their reading records please!</p>	<p style="text-align: center;"><b>Maths and SPAG</b></p> <p>Children have a CGP maths and SPAG book to help them better prepare for their SATS tests. They should complete a page of each a week. Maths books are checked on a Monday and SPAG books are checked on a Tuesday.</p>	<p style="text-align: center;"><b>Timetables and spelling</b></p> <p>Children should be practicing their timetables and spellings multiple times every week please! They can do this on timetable rockstars (TTRS) and Ed shed (for spelling).</p>
---	--	--

**If you are struggling to access any of this homework, please speak to your child’s class teacher about alternative arrangements.**



**Other information**

**School Uniform**

All children should come to school in the correct school uniform, which is:

- Meadow Park sweatshirt
- Plain white polo shirt
- Plain grey or white socks
- Grey trousers
- Grey skirt
- Black, sensible shoes (no heels)



**PE Kit**

Children may come to school wearing their PE kits on their PE days. Our PE days are:

**Monday**

Our PE uniform is:

- Meadow Park black shorts
  - Meadow Park emerald green T shirt
  - Plimsolls, trainers or bare feet (for indoor PE)
  - Trainers with good grip and support for outside sport (different to indoor trainers)
  - Plain grey or black tracksuit bottoms and top (optional)
- Hairband to tie long hair back

**Any issues?**

In the first instance, please speak with the class teacher at the end of the day. If you are unable to be there on collection, please contact the school office to arrange a time to meet with the teacher.

If you are still unsatisfied, please arrange a meeting with the phase leader.

Acorns, Cherry, Willow, Maple – **Ms Pack**

Beech, Sycamore, Elm, Chestnut, Ash, Holly, Hazel, Oak – **Ms Geary**

If after that meeting, you continue to be unhappy with the resolution, please contact the school office to make an appointment with **Ms Holehouse, Ms Voisey** or **Ms Drysdale**.

If you require specific support regarding a child with SEN, please arrange a meeting with **Ms Mughal**.

**Lunchtime**

Our delicious lunches are provided by Educatering Solutions.



Lunches must be ordered by **midnight on Tuesday**, to ensure that your child has lunches for the **following** week. As the lunches are cooked to order, there are usually no spare lunches.

You can place your lunch orders through MCAS.



**Snacks and Water Bottles**

Please make sure your child has a clearly labelled water bottle in school, so that they can stay hydrated.

We also welcome the children to bring in a healthy, nut free snack to enjoy at playtime.



**Key Dates for your diary**

- Tuesday 14<sup>th</sup> April 2026 – Children return to school & clubs begin
- Tuesday 21<sup>st</sup> April 2026 – Y3 @ Baylab
- Wednesday 22<sup>nd</sup> April 2026 – Earth Day
- Wednesday 22<sup>nd</sup> April 2026 – Y3 @ Baylab, Y2 Winchester Science Museum
- Monday 27<sup>th</sup> April 2026 – Y3 extended day at Ufton Court
- Thursday 20<sup>th</sup> April 2026 – Y5 Sulham Estate
- Monday 4<sup>th</sup> May 2026 – Friday 8<sup>th</sup> May 2026 – No clubs
- Monday 4<sup>th</sup> May 2026 – Bank Holiday – School closed
- Thursday 7<sup>th</sup> May 2026 – Polling Day – School closed to R, Y1, Y2, Y3, Y4, Y5
- Monday 11<sup>th</sup> May 2026 – Thursday 14<sup>th</sup> May 2026 – Y6 SATs week
- Monday 18<sup>th</sup> May 2026 – Chestnut to Newbury Canal and River Trust
- Tuesday 19<sup>th</sup> May 2026 – Elm to Newbury Canal and River Trust
- Friday 22<sup>nd</sup> May 2026 – Clubs end & May half term holiday (3:15 finish)
- Monday 25<sup>th</sup> May – Friday 29<sup>th</sup> May 2026 – May half term – school closed
- Monday 1<sup>st</sup> June 2026 – Back to school and clubs begin
- Monday 1<sup>st</sup> June 2026 – Friday 12<sup>th</sup> June 2026 – Y4 multiplication check
- Wednesday 3<sup>rd</sup> June 2026 – Y6 to Reading Museum
- Monday 8<sup>th</sup> June 2026 – Class photos
- Wednesday 10<sup>th</sup> June 2026 – Year 4 – Englefield Estate
- Monday 8<sup>th</sup> June 2026 – Friday 12<sup>th</sup> June 2026 – Y1 phonics screening check
- Wednesday 17<sup>th</sup> June 2026 – Y6 to Milestones Museum
- Thursday 18<sup>th</sup> July 2026 – Year 1 trip to Beale Park
- Wednesday 24<sup>th</sup> June 2026 – Acorns to Oceanarium & Bournemouth Beach
- Monday 6<sup>th</sup> July 2026 – Friday 10<sup>th</sup> July 2026 – Sports Week
- Thursday 9<sup>th</sup> July 2026 – Reports home
- Friday 10<sup>th</sup> July 2026 – Sports Day
- Friday 10<sup>th</sup> July 2026 – Clubs end
- Monday 13<sup>th</sup> July 2026 – Transition Day
- Tuesday 14<sup>th</sup> & Wednesday 15<sup>th</sup> July 2026 – Y5 & Y6 leavers production
- Friday 17<sup>th</sup> July 2026 – Y6 Leavers Assembly – 9am
- Friday 17<sup>th</sup> July 2026 – End of term – 1:30pm finish
- Wednesday 2<sup>nd</sup> September 2026 – Children return for 2026/27

Packed Lunches

# Lunchbox Builder for Kids

\*PICK ONE ITEM FROM EACH CATEGORY\*

\*MIX & MATCH EACH DAY!\*

## Starchy Carbohydrate



## Protein



## Vegetables



## Fruit



## Dairy or fortified alternative

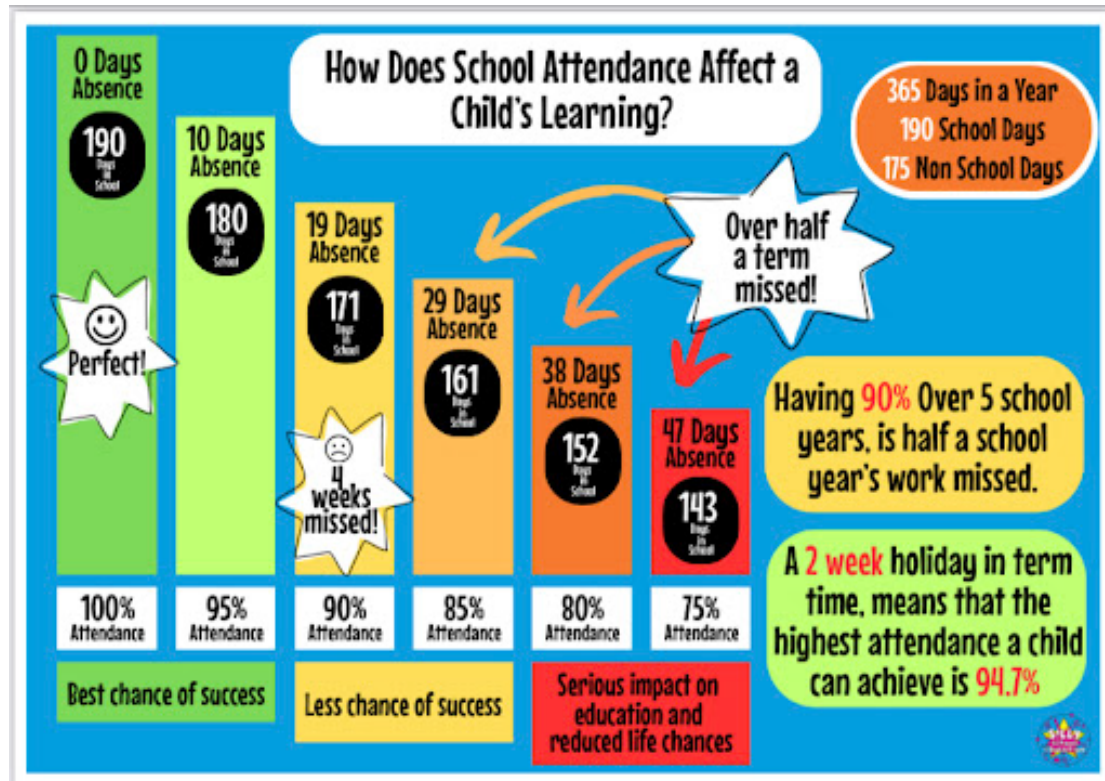


## Don't forget a drink!



Laura  
Matthews  
Nutrition

Attendance



Authorised Absence	Explanation	Unauthorised Absence	Explanation
Illness	When a child is too unwell to attend and parents inform the school.	Family holidays during term time	Term-time holidays are not permitted unless exceptional circumstances are approved.
Medical or dental appointments	When appointments cannot be arranged outside school hours and medical proof has been provided and accepted by the school.	Late arrival without valid reason	Arriving after registration closes without explanation.
Religious observance	Days set aside by the family's religious community.	Keeping child off for birthdays or special outings	These are not considered valid reasons for absence.
Approved exceptional circumstances	E.g., a close family funeral.	Parent or carer illness (non-emergency)	Unless the situation places the child at risk if they attend.
Participation in approved educational activities	e.g., school visits, exams, sporting events.	Unexplained absence	No reason provided or the school does not accept the reason.
Traveller family commitments (in certain contexts)	When absence fits within recognised travelling patterns.	Overleeping or poor morning routine	Not considered a legitimate reason for missing school.
Authorised part-time timetable (temporary)	When agreed with SEND or medical teams.	Avoiding school due to minor complaints	Mild cold, tiredness, or refusing to come in without valid cause.



Term Dates 2026/27



## Terms & Holidays – 2026/2027

<b>Autumn – Term 1</b>	
<i>Staff Development Day</i>	<i>Tuesday 1<sup>st</sup> September 2026</i>
Start of Term – Children in School	Wednesday 2 <sup>nd</sup> September 2026
Last day of Term	Friday 16 <sup>th</sup> October 2026
Term Break - Holiday	Monday 19 <sup>th</sup> October – Friday 30 <sup>th</sup> October 2026
<b>Autumn – Term 2</b>	
Start of Term – Children in School	Monday 2 <sup>nd</sup> November 2026
Last day of Term	Friday 18 <sup>th</sup> December 2026
Term Break - Holiday	Monday 21 <sup>st</sup> December – Friday 2 <sup>nd</sup> January 2027
<b>Spring – Term 3</b>	
<i>Staff Development Day</i>	<i>Monday 4<sup>th</sup> January 2027</i>
Start of Term – Children in School	Tuesday, 5 <sup>th</sup> January 2027
Last day of Term	Friday, 12 <sup>th</sup> February 2027
Term Break – Holiday	Monday 15 <sup>th</sup> February - Friday 19 <sup>th</sup> February 2027
<b>Spring – Term 4</b>	
Start of Term – Children in School	Monday, 22 <sup>nd</sup> February 2027
Last day of Term	Thursday, 25 <sup>th</sup> March 2027
Term Break – Holiday	Friday 26 <sup>th</sup> March – Friday 9 <sup>th</sup> April 2027
<b>Summer – Term 5</b>	
Start of Term – Children in School	Monday 12 <sup>th</sup> April 2027
Last day of Term	Friday, 28 <sup>th</sup> May 2027
<i>Early May Bank Holiday</i>	<i>Monday 3<sup>rd</sup> May 2027</i>
Term Break – Holiday	Monday 31 <sup>st</sup> May – Friday 4 <sup>th</sup> June 2027
<b>Summer – Term 6</b>	
Start of Term – Children in School	Monday, 7 <sup>th</sup> June 2027
Last day of Term	Friday 23 <sup>rd</sup> July 2027
Term Break – Holiday	Monday 26 <sup>th</sup> July – 1 <sup>st</sup> week September TBC



**Free School Meals Application**

Free School Meals are available to support families and ensure every child has access to a healthy, nutritious meal during the school day. If your child is eligible, they will receive a free meal at lunchtime, and the school will also receive additional funding to support their learning. Families may qualify if they receive certain benefits, and applying is quick and confidential. Even if your child prefers packed lunches, applying still helps the school. If your child is eligible for free school meals, they are entitled to 1 free club space per term. Children are eligible automatically in Reception, Year 1 & Year 2. Please contact the school office if you require a paper form.



**APPLICATION FOR FREE SCHOOL MEALS**

Please complete this form only if you are eligible under the categories listed overleaf and your child attends a Reading school.

**PART A**

Please provide the following information (PRINT)

Full Name of Claimant: (Mr/Mrs/Miss/Ms)									
Address:									
Postcode:					Telephone:				
National Insurance Number:					Date of Birth: / /				
NASS Reference Number:									

Children for whom you are claiming:

Surname	Other Names	M/F	Date of Birth	School Attending	Relationship to Child
			//		
			//		
			//		
			//		
			//		
			//		

**Declaration by Claimant**

I agree that you will use the information I have provided to process my claim for free school meals and will contact other sources as allowed by law to verify my initial, and ongoing, entitlement.	
Signature:	Date:

**DATA SECURITY**

Personal data provided on this form may be held on a computer and is therefore subject to the Data Protection Act 1998. It will only be used for the intended purpose i.e. to determine eligibility for FSM.