

Year 1

I hope you had a wonderful Easter break and are feeling well-rested and ready for the last term of Year 1. We have lots of exciting learning planned.

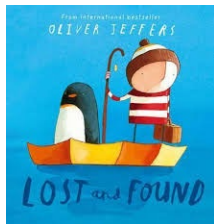
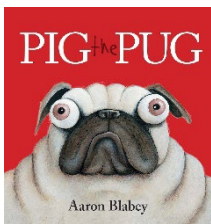
We are learning about **'Our local area'** and we will have a geography focus during the first half of the term. Our focus texts in English will start with *'Lost and found'* by Oliver Jeffers, followed by *'Pig the pug'* by Aaron Blabey.

Many thanks for your support
Ms Johnson & Ms Lyons

Curriculum Information

English

In English we will be exploring the texts *Lost and Found* and *'Pig the pug'*. We will be writing character descriptions, narratives, letters and non-fiction 'How to' guides.



Maths

In maths we begin by exploring multiplication and division. We will learn out 2s, 5s and 10s timetables. Next, we will move onto simple fractions like halves and quarters. We will finish the first half of the term with a quick unit on position and direction- time to start practicing our left and rights!



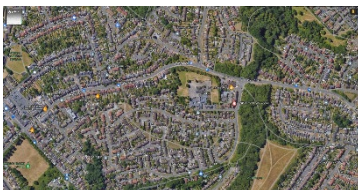
Science

In science we will be learning about plants, identifying and naming common plants and learning about their basic structure. We will also be learning to identify and name a variety of common animals.



Geography

In geography we will learn all about the area we live in using maps and fieldwork. We will even go on a walk around our area!



Computing

In computing we will explore how technology can be used to collect and display data and information. We will also create digital artwork.



Art

We will learn about the pop art movement and use colour and contrast to create images.



RE

This term, we will be learning about significant people in the Jewish faith and Jewish celebrations. We will also learn about the Jewish place of worship; a synagogue.

PE

In PE, we will be learning gymnastics, games & athletics.



PSHE

In PSHE this term, we will be learning about relationships and things that are unique about us!



Music



In Music we follow the Charanga programme. This term, we will have fun learning to improvise with songs and perform together!



Home Learning

At Meadow Park Academy, we believe that home learning can provide valuable opportunities to consolidate and practice learning.

We expect all children in Year 1 to complete the following weekly:

Reading

The children will be sent home with a reading book matching their phonological knowledge so they can continue to practice their learning at home.

They are expected to read 5 times per week.



A note of this should be put in their reading record book.

The Year 1 Phonics screening check will take place this term. Please help give your child the best chance by using the resources given out at the phonics parent meeting. Miss Johnson is following up with parents who were unable to attend. If you are still yet to receive the pack, please let her know.

Spelling Shed

As a school, we have subscribed to Spelling Shed, an incredible app that allows children to practice their spellings in a fun and interactive way.



Logins have already been sent out, but please speak to your class teacher if you need another copy.

Your child will take home a weekly homework sheet corresponding to the spellings learnt in class. Children who return these sheets to Miss Johnson get 5 housepoints!

<https://www.spellingshed.com/en-gb/>

Times Table Rockstars

Times Table Rockstars is a wonderful program which allows children to battle and play games to win tokens. All they have to do is answer their times tables!

<https://trockstars.com/>

Children have logins to Numbots stuck on the first page of their reading record. This is great for practicing maths fluency online. If you need another copy, please speak to Miss Johnson.

<https://numbots.com/>



If you are struggling to access any of this homework, please speak to your child's class teacher about alternative arrangements.



Other information

School Uniform

All children should come to school in the correct school uniform, which is:

- Meadow Park sweatshirt
- Plain white polo shirt
- Plain grey or white socks
- Grey trousers
- Grey skirt
- Black, sensible shoes (no heels)



PE Kit

Children may come to school wearing their PE kits on their PE days. Our PE day is:

Friday

Our PE uniform is:

- Meadow Park black shorts
- Meadow Park emerald green T shirt
- Plimsolls, trainers or bare feet (for indoor PE)
- Trainers with good grip and support for outside sport (different to indoor trainers)
- Plain grey or black tracksuit bottoms and top (optional)
- Hairband to tie long hair back

Any issues?

In the first instance, please speak with the class teacher at the end of the day. If you are unable to be there on collection, please contact the school office to arrange a time to meet with the teacher.

If you are still unsatisfied, please arrange a meeting with the phase leader.

Acorns, Cherry, Willow, Maple – **Ms Pack**

Beech, Sycamore, Elm, Chestnut, Ash, Holly, Hazel, Oak – **Ms Geary**

If after that meeting, you continue to be unhappy with the resolution, please contact the school office to make an appointment with **Ms Holehouse, Ms Voisey or Ms Drysdale**.

If you require specific support regarding a child with SEN, please arrange a meeting with **Ms Mughal**.

Lunchtime

Our delicious lunches are provided by Educatering Solutions.



Lunches must be ordered by **midnight on Tuesday**, to ensure that your child has lunches for the **following** week. As the lunches are cooked to order, there are usually no spare lunches.

You can place your lunch orders through MCAS.



Snacks and Water Bottles

Please make sure your child has a clearly labelled water bottle in school, so that they can stay hydrated.

We also welcome the children to bring in a healthy, nut free snack to enjoy at playtime.



Key Dates for your diary

- **Tuesday 14th April 2026 – Children return to school & clubs begin**
- Tuesday 21st April 2026 – Y3 @ Baylab
- Wednesday 22nd April 2026 – Earth Day
- Wednesday 22nd April 2026 – Y3 @ Baylab, Y2 Winchester Science Museum
- Monday 27th April 2026 – Y3 extended day at Ufton Court
- Thursday 20th April 2026 – Y5 Sulham Estate
- **Monday 4th May 2026 – Friday 8th May 2026 – No clubs**
- **Monday 4th May 2026 – Bank Holiday – School closed**
- **Thursday 7th May 2026 – Polling Day – School closed to R, Y1, Y2, Y3, Y4, Y5**
- Monday 11th May 2026 – Thursday 14th May 2026 – Y6 SATs week
- Monday 18th May 2026 – Chestnut to Newbury Canal and River Trust
- Tuesday 19th May 2026 – Elm to Newbury Canal and River Trust
- Friday 22nd May 2026 – Clubs end & May half term holiday (3:15 finish)
- **Monday 25th May – Friday 29th May 2026 – May half term – school closed**
- Monday 1st June 2026 – Back to school and clubs begin
- Monday 1st June 2026 – Friday 12th June 2026 – Y4 multiplication check
- Wednesday 3rd June 2026 – Y6 to Reading Museum
- Monday 8th June 2026 – Class photos
- Wednesday 10th June 2026 – Year 4 – Englefield Estate
- Monday 8th June 2026 – Friday 12th June 2026 – Y1 phonics screening check
- Wednesday 17th June 2026 – Y6 to Milestones Museum
- Thursday 18th July 2026 – Year 1 trip to Beale Park
- Wednesday 24th June 2026 – Acorns to Oceanarium & Bournemouth Beach
- Monday 6th July 2026 – Friday 10th July 2026 – Sports Week
- Thursday 9th July 2026 – Reports home
- Friday 10th July 2026 – Sports Day
- Friday 10th July 2026 – Clubs end
- Monday 13th July 2026 – Transition Day
- Tuesday 14th & Wednesday 15th July 2026 – Y5 & Y6 leavers production
- Friday 17th July 2026 – Y6 Leavers Assembly – 9am
- **Friday 17th July 2026 – End of term – 1:30pm finish**
- **Wednesday 2nd September 2026 – Children return for 2026/27**

Packed Lunches

Lunchbox Builder for Kids

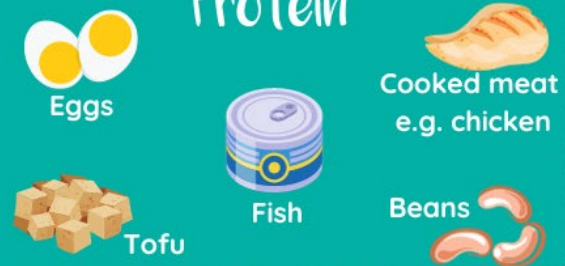
PICK ONE ITEM FROM EACH CATEGORY

MIX & MATCH EACH DAY!

Starchy Carbohydrate



Protein



Vegetables



Fruit



Dairy or fortified alternative

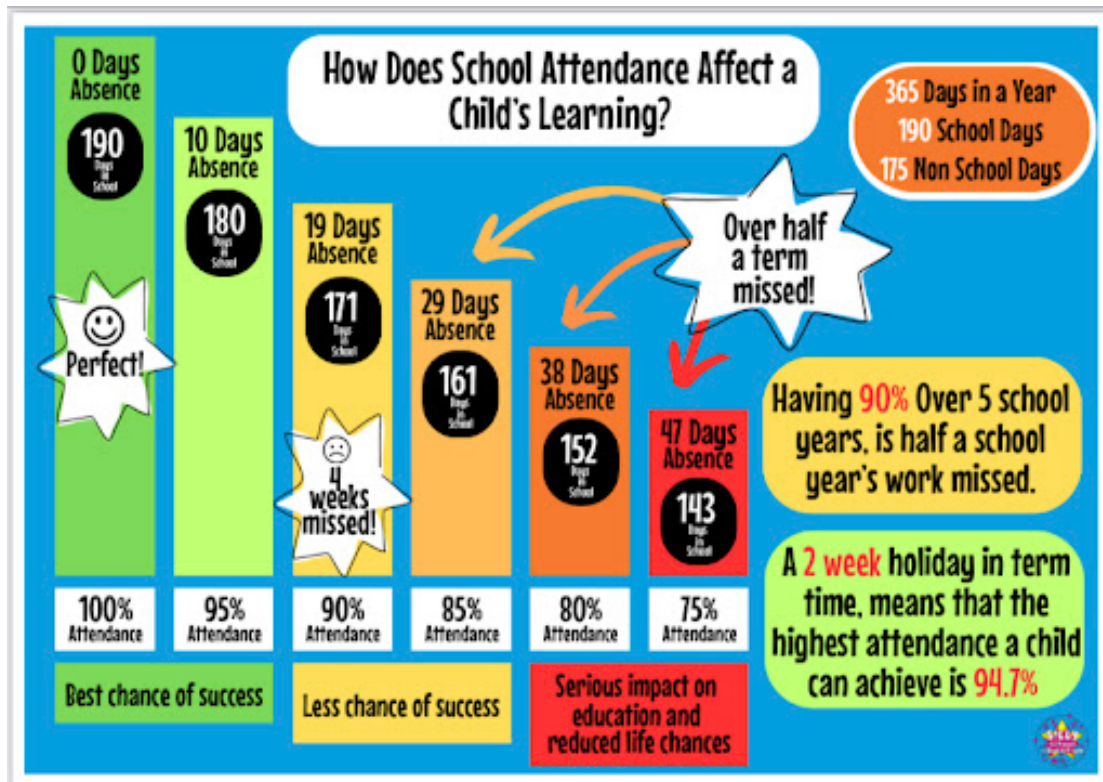


Don't forget a drink!



Laura
 Matthews
 Nutrition

Attendance



Authorised Absence	Explanation	Unauthorised Absence	Explanation
Illness	When a child is too unwell to attend and parents inform the school.	Family holidays during term time	Term-time holidays are not permitted unless exceptional circumstances are approved.
Medical or dental appointments	When appointments cannot be arranged outside school hours and medical proof has been provided and accepted by the school.	Late arrival without valid reason	Arriving after registration closes without explanation.
Religious observance	Days set aside by the family's religious community.	Keeping child off for birthdays or special outings	These are not considered valid reasons for absence.
Approved exceptional circumstances	E.g., a close family funeral.	Parent or carer illness (non-emergency)	Unless the situation places the child at risk if they attend.
Participation in approved educational activities	e.g., school visits, exams, sporting events.	Unexplained absence	No reason provided or the school does not accept the reason.
Traveller family commitments (in certain contexts)	When absence fits within recognised travelling patterns.	Oversleeping or poor morning routine	Not considered a legitimate reason for missing school.
Authorised part-time timetable (temporary)	When agreed with SEND or medical teams.	Avoiding school due to minor complaints	Mild cold, tiredness, or refusing to come in without valid cause.



Term Dates 2026/27



Terms & Holidays – 2026/2027

Autumn – Term 1	
<i>Staff Development Day</i>	<i>Tuesday 1st September 2026</i>
Start of Term – Children in School	Wednesday 2 nd September 2026
Last day of Term	Friday 16 th October 2026
Term Break - Holiday	Monday 19 th October – Friday 30 th October 2026
Autumn – Term 2	
Start of Term – Children in School	Monday 2 nd November 2026
Last day of Term	Friday 18 th December 2026
Term Break - Holiday	Monday 21 st December – Friday 2 nd January 2027
Spring – Term 3	
<i>Staff Development Day</i>	<i>Monday 4th January 2027</i>
Start of Term – Children in School	Tuesday, 5 th January 2027
Last day of Term	Friday, 12 th February 2027
Term Break – Holiday	Monday 15 th February - Friday 19 th February 2027
Spring – Term 4	
Start of Term – Children in School	Monday, 22 nd February 2027
Last day of Term	Thursday, 25 th March 2027
Term Break – Holiday	Friday 26 th March – Friday 9 th April 2027
Summer – Term 5	
Start of Term – Children in School	Monday 12 th April 2027
Last day of Term	Friday, 28 th May 2027
<i>Early May Bank Holiday</i>	<i>Monday 3rd May 2027</i>
Term Break – Holiday	Monday 31 st May – Friday 4 th June 2027
Summer – Term 6	
Start of Term – Children in School	Monday, 7 th June 2027
Last day of Term	Friday 23 rd July 2027
Term Break – Holiday	Monday 26 th July – 1 st week September TBC



day. If your child is eligible, they will receive a free meal at lunchtime, and the school will also receive additional funding to support their learning. Families may qualify if they receive certain benefits, and applying is quick and confidential. Even if your child prefers packed lunches, applying still helps the school. If your child is eligible for free school meals, they are entitled to 1 free club space per term. Children are eligible automatically in Reception, Year 1 & Year 2. Please contact the school office if you require a paper form.



APPLICATION FOR FREE SCHOOL MEALS

Please complete this form only if you are eligible under the categories listed overleaf and your child attends a Reading school.

PART A

Please provide the following information (PRINT)

Full Name of Claimant: (Mr/Mrs/Miss/Ms)									
Address:									
Postcode:					Telephone:				
National Insurance Number:					Date of Birth: / /				
NASS Reference Number:									

Children for whom you are claiming:

Surname	Other Names	M/F	Date of Birth	School Attending	Relationship to Child
			//		
			//		
			//		
			//		
			//		
			//		

Declaration by Claimant

I agree that you will use the information I have provided to process my claim for free school meals and will contact other sources as allowed by law to verify my initial, and ongoing, entitlement.	
Signature:	Date:

DATA SECURITY

Personal data provided on this form may be held on a computer and is therefore subject to the Data Protection Act 1998. It will only be used for the intended purpose i.e. to determine eligibility for FSM.