



*Where learning takes root and
imagination takes flight*

Meadow Park Academy

Prospectus



Proud to be part of

anthem

www.anthemtrust.uk



Contents

Welcome from the Headteacher	Page 3
Our vision and values	Page 4
Our curriculum	Pages 5-6
How our school is organised	Page 7
Special Educational Needs	Page 8
Home learning	Page 9
Enrichment	Page 10
Breakfast & After School Clubs	Page 10
Our expectations	Page 11
How to apply for a place	Page 12
School uniform & P.E. kit	Page 12
The school day	Page 13
Attendance	Page 13
PTA & parental involvement	Page 14
Contacting us	Back cover



Welcome from our Headteacher

Dear Parents and Carers,

Welcome to the Meadow Park Academy prospectus. I hope that the information you find here will give you a flavour of our ambitious, thriving school. Our school is situated in spacious grounds which the children enjoy in both their learning and leisure time. All classes are well resourced to provide an exciting, relevant curriculum which fosters a life-long love of learning for every child.

We are very proud of our school, our children and their successes. At every stage of their school journey we are committed to nurturing our children to be successful learners, confident individuals and responsible citizens. Through a wide range of learning experiences, we want to inspire children and help them to be the best they can be.

The emotional well-being of every child is also an essential part of our ethos. We nurture and help our children to learn how to be happy, enjoy meaningful relationships with family and friends, and live their lives without fear or worry.

If you would like to come and visit our school, meet me and our staff, and look around our open green site, you would be very welcome.

Miss K Holehouse
Headteacher



“

Pupils enjoy coming to school and are keen to talk about their learning. As a result of a carefully thought out curriculum, pupils achieve well.

Ofsted, 2023

”

Our vision and values

At Meadow Park Academy we aim to develop the individual as a whole — mind, body and spirit, by celebrating each child’s unique skills and qualities and targeting personal development alongside achievement and progress.

We encourage our children to be creative, take risks and build character in order to maximise achievement in all areas. In doing so they develop a lifelong love of learning through nurture and adventure as well as the resilience to follow their own paths and contribute to our communities as responsible global citizens.

Our values are to be...



Our curriculum

We pride ourselves on providing an exciting curriculum, which enables our children to be **motivated**, **proud** and **aspirational**.

Our curriculum centers around **carefully selected topics** that expose our children to the rich history, culture and diversity of the world that we live in. Many aspects of our curriculum reflect our children's backgrounds and allow us to celebrate the different cultures within our community.

Three key elements form an integral part of our school curriculum. These enhancers allow us to nurture the 'whole child', alongside core studies, and allowing our children to learn in more varied and exciting ways.



Creative communication

Nationally, there is evidence of a "vocabulary gap" between children on-entry to school. In order to close this gap and to promote a love of reading and writing, we provide a word-rich environment, with a focus on keywords in all subjects, so that children can develop their use of language and increase their vocabulary. We plan for a range of opportunities for our children to communicate for different creative purposes; including climate change marches, filming wildlife documentaries and much more.



Reading has been successfully prioritised in school. A genuine love of books permeates throughout school. Pupils are keen to delve into a story and find out what happens next.

Ofsted, 2023



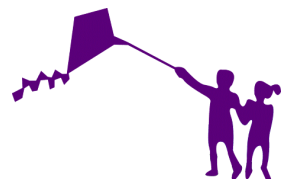
Healthy body, healthy mind

We encourage our children to value both their mental and physical well-being. We promote resilience, healthy living and active learning within and beyond the classroom. We work with professional PE coaches and have an Outdoor Learning Teacher to enhance our children's experience of learning through play, exploration, and hands-on experiences. Here our children develop confidence and self-esteem, whilst learning to take risks, and assess risks.

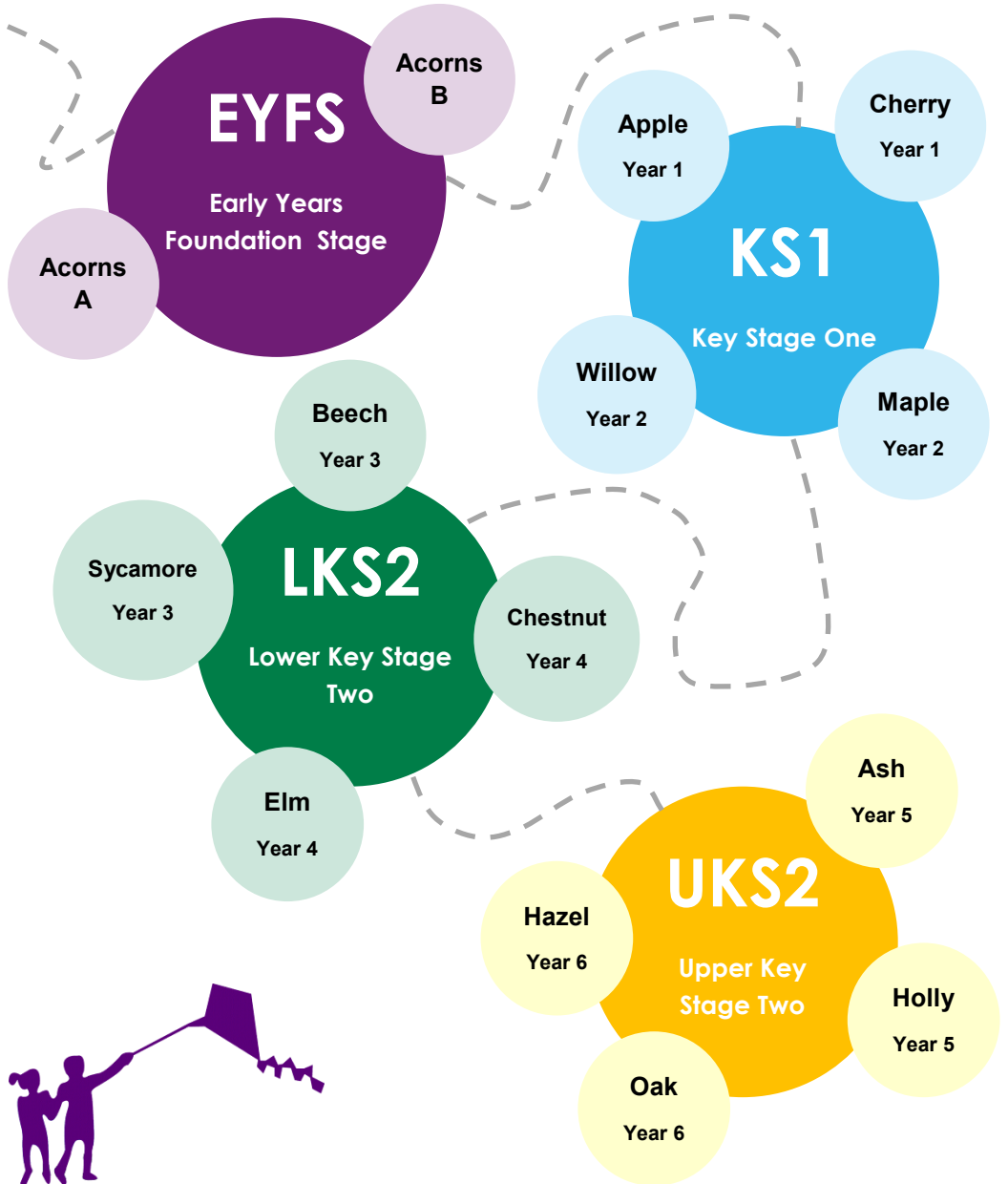


Our World, our community, our future

We prepare our children to be responsible, conscientious and active members of our school community, as well as within the wider community. This is achieved through the work of our school council, supporting local charities and community events. Our Creative Curriculum topics support a growing understanding of the world they live in. We teach them the impact they can have on it both positive and negative, through studying important issues such as climate change and racial equality.



How our school is organised



Special Educational Needs



Robust systems are in place for the early identification of pupils with special educational needs and/or disabilities (SEND). Staff know what to do if they are concerned that a pupil may need extra help.



Ofsted, 2023

Special Educational Needs (SEND) encompass a broad-spectrum of issues including speech, language and communication difficulties, physical disabilities and social, emotional mental health difficulties.

We believe all children are unique and should be valued equally, working closely with other professionals to ensure all children have access to appropriate learning experiences to help them achieve and succeed in school. We are committed to adapting the curriculum and learning new approaches to support our children to thrive.

Our **Inclusion Team** supports not only the co-ordination of SEND across the school, but the social, emotional, and mental health needs of our families. The team's work is enhanced by a number of specialist practitioners, including:

A Family Support Worker who helps families access community services and provides assistance such as financial advice and parenting support.

A Play Therapist who is a qualified professional who works individually with children who need specialist intervention as a result of trauma or emotional needs.

Emotional Literacy Support Assistants (ELSAs) who provide targeted support in small groups or in 1:1 sessions for children who need help with confidence and emotional regulation. The ELSAs are also able to identify and support children within the classes within which they work.



Home learning

We prioritise the key skills children require through our home learning.

In EYFS and Key Stage 1, this is phonics, reading and number work.

In Lower Key Stage 2 this is reading, spelling, number work and times tables.

In Upper Key Stage 2 this is reading, spelling and specific learning in preparation for Year 6 SATs.



“

A well-designed curriculum is in place from the early years and beyond. This curriculum is ambitious for all pupils. The school has thought about what pupils should learn throughout their time at the school and how it can help them to love learning.

”

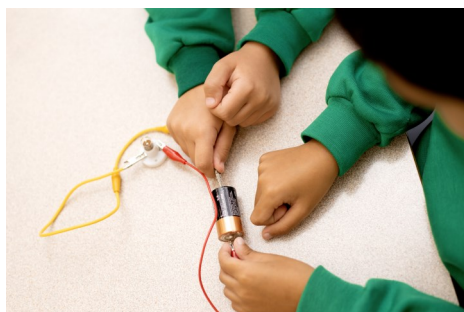
Ofsted, 2023



Enrichment

At Meadow Park we feel strongly about providing our children with enriching experiences that go beyond the National Curriculum offer. As such, we plan for a variety of experiences throughout the academic year. These opportunities are either for a day or a full week and are timetabled throughout the year. This has previously included events such as:

- Outdoor Learning Week
- Black History Week
- Language & Geography Week
- Sport & Health Week
- Science Week



Reading has been successfully prioritised in school. A genuine love of books permeates throughout school. Pupils are keen to delve into a story and find out what happens next.

Ofsted, 2023



Breakfast and After School Clubs

We understand that for many families there is a need for excellent childcare before and after the school day, so we provide this at our Breakfast and After School Clubs. Our Breakfast Club is led and managed by two qualified members of staff, and overseen by the school. This means that there is consistency of care, and quality assurance. The staff who work in the Breakfast Club are known to the children and are teaching assistants within school.

Our After School Club is run by Funky Fidgets, but is overseen by the school. The Club runs many fun and exciting activities such as arts & crafts, dodgeball, dressing up, play dough, board games, football, puzzles, and baking.

Bookings can be made through Funky Fidgets. Forms are available at the school office.

Our expectations

As a school, we want all children to understand their social responsibility, both in class, out of the class and within the wider community. We believe all children are intrinsically motivated to behave in what we refer to as a 'pro-social' way, can self-regulate and can support others to regulate themselves.

At Meadow Park we define pro-social behaviour as children actively engaging in their learning, modelling positive learning behaviours and understanding that everyone has a right to learn.

Children are expected to be polite, courteous and respectful to everyone in the school and the wider community, whilst keeping themselves and others safe by making sensible choices in and around the school.

We aim to create a school where behaviour is managed through using restorative approaches, where children understand the impact of their actions and find, retain and build healthy relationships.



“Pupils are confident that they have an adult in school to share any worries with. This helps them to feel safe.”

Ofsted, 2023



How to apply for a place

Applications for places at Meadow Park are made through Brighter Futures for Children's co-ordinated admissions scheme, and parents should complete their home Local Authority Standard Application Form.

Each year our admissions process follows a schedule to fit in, wherever possible, with the common timetable agreed by Reading Borough Council.

The planned admission figures refer to the number of children admitted in the year that they turn 5 in one academic year. Meadow Park's admission number for 2025-26 is 60.

School uniform and P.E. kit

Our children are expected to come to school every day in the appropriate school uniform.

Girls uniform

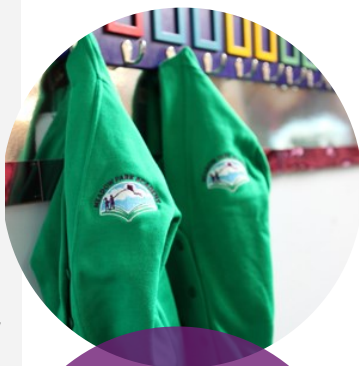
- White polo Shirt
- Emerald Green sweatshirt or cardigan
- Grey or black skirt/trousers.
- Green and white check summer dress.
- Plain grey or white socks.
- Plain grey tights.
- Black shoes (no trainers).

Boys uniform

- White polo shirt
- Emerald Green sweatshirt
- Grey or black trousers/shorts
- Plain grey or white socks
- Black shoes (no trainers)

P.E. kit

- Emerald Green t-shirt
- Black shorts
- Plimsolls or trainers



We provide a second hand uniform service offering good quality uniform at a reduced price.

The school day

We have a 'soft start' at Meadow Park. This means that the school gates and classroom doors open at 8.30am.

Children are welcome to come straight into school at any time between 8.30am and 8.40am and start their morning activities. The school gates and classroom doors close at 8.40am for registration.

The school day finishes at 3.15pm for all children. The school gates open at 3.10pm. Parents are asked to wait on the school playground until the children are

dismissed by their class teacher.

Dropping off and collecting children

If children arrive at school later than 8.40am, then a parent/carer must sign them in at the school office.

Due to space and for everyone's health and safety, parents are not able to park in the school car park, unless agreed with the Headteacher. Walking, scooting and cycling to school is encouraged.



Attendance

We encourage all children to attend school every day, and have a policy not to authorise holidays unless there are exceptional circumstances as to why they should be taken during term time. If a child is unable to attend school due to illness it is important that the school are notified at the start of the day. We have a policy to phone parents if we are unsure of where the child is.

We work closely with the Educational Welfare Office and any child who has an attendance of less than 90% is considered as a Persistent Absentee and will be given attendance targets.

PTA and parental involvement

A range of opportunities are provided throughout the year for parents to engage with the school in support of their child's learning and development. These include; open evenings, parent's evenings, end of topic celebrations, curriculum workshops and music/drama performances.

Close links exist between parents and school. Parental involvement is encouraged and greatly appreciated. Many parents help in school in a variety of ways, such as working within the classroom or with after school clubs and school trips. Anyone wishing to our the Family Support Worker.

Meadow Park is passionate about supporting local charities within the community. These charities are carefully selected and often have existing relationships with our school community.

Various **fundraising activities** take place during the school year with the help of our school council, children, staff and parents.

Parental involvement and support at school fundraising events is much valued and welcomed.





Meadow Park Academy

Norcot Road, Tilehurst, Reading, RG30 6BS

0118 937 5562

admin@meadowpark.anthemtrust.uk

Further information about our school can be found on
our school website

www.meadowpark.anthemtrust.uk



Stay connected with our school community on X!
Follow us at @MPATilehurst to see what exciting
things our school is up to.